

MONTHLY MEMBERSHIP PROGRESS REPORT

LOCATION INDIA

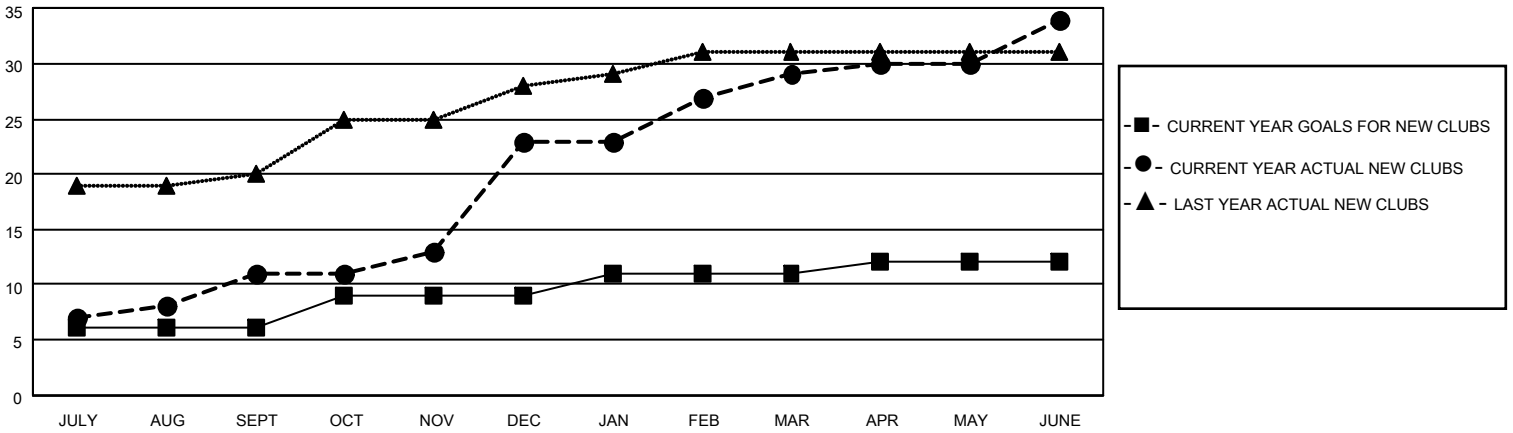
District 317 A

Results as of: 6/30/2021

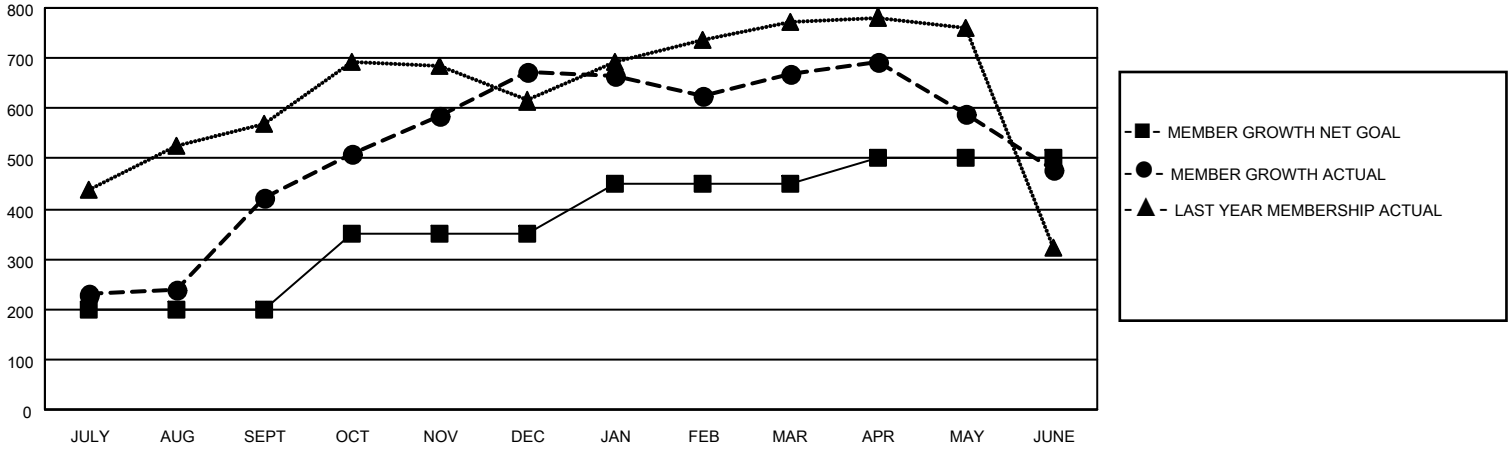
Clubs			
RESULTS FOR 2020-2021			
QUARTER	NEW CLUB GOAL	NEW CLUBS	DROPPED CLUBS
JULY/AUG/SEPT	6	11	0
OCT/NOV/DEC	3	12	0
JAN/FEB/MAR	2	6	17
APR/MAY/JUNE	1	5	0

Members			
RESULTS FOR 2020-2021			
QUARTER	MEMBER GROWTH NET GOAL	MEMBER GROWTH ACTUAL	DROPPED MEMBERS ACTUAL (including transfers)
JULY/AUG/SEPT	200	656	188
OCT/NOV/DEC	150	666	402
JAN/FEB/MAR	100	236	234
APR/MAY/JUNE	50	378	552

GOALS AND ACTUAL NEW CLUBS CUMULATIVE



GOALS AND ACTUAL MEMBERS CUMULATIVE



DROPPED CLUBS: 17

154 CLUBS OF 205 ADDED 1 OR MORE NEW MEMBERS

GENDER DISTRIBUTION

MALE 3,659 (65.81%)
 FEMALE 1,901 (34.19%)

DROPPED MEMBERS

DECEASED	40
CLUB CANCELLED	206
OTHER	1,130
TOTAL	1,376

[CLICK HERE FOR CUMULATIVE MEMBERSHIP DATA](#)

TOTAL FAMILY UNIT MEMBERS	2,440
FAMILY MEMBERS PAYING HALF DUES	1,341